



The Bradford Progress

17th - 18th May 2025

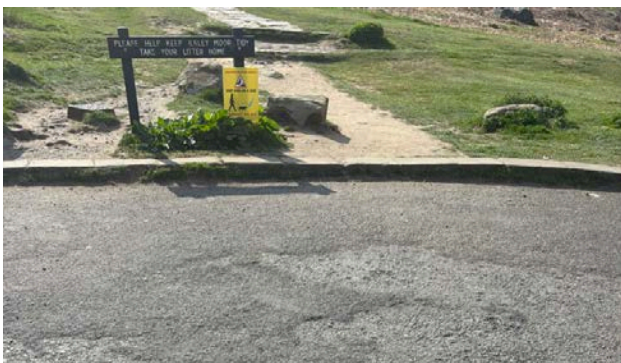
Physical Access Guide

Cow & Calf Quarry

Physical accessibility information



There is a hard standing car park outside the cafe. Toilets are available in the cafe.



There is a raised curb from car park to path.



From here there is steep, uneven terrain with steps, flagstones and loose ground

Cow & Calf Quarry

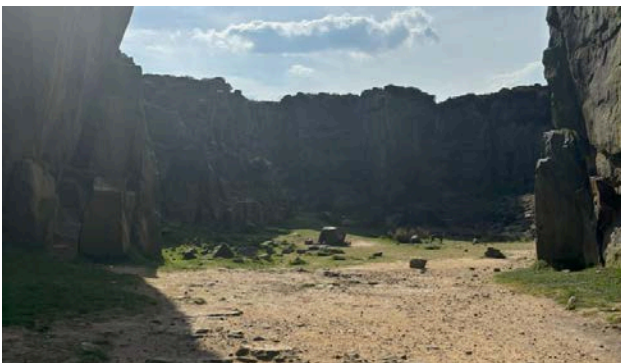
Further accessibility information



Further photos of uneven terrain.



The path is very steep. There are two benches on the path that could be used for resting. Please note these benches have no view of the Quarry.



The path ends at the quarry entrance. Beyond this the ground is rocky and uneven, with loose gravel and debris.

Leeds & Liverpool Canal

Further accessibility information

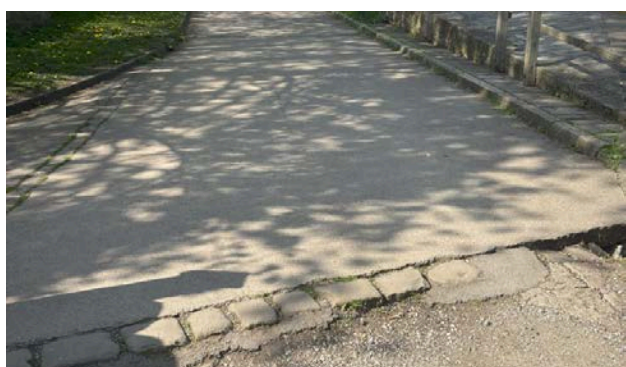


The road towards the accessible viewing area is steep but short. Parking is by permit only.

The accessible viewing area is reached by the narrow path shown.



The accessible viewing platform will be in this location (shown facing away from the canal locks)



The terrain changes from smooth to uneven between the viewing area and the tow path. There is loose debris on the tow path



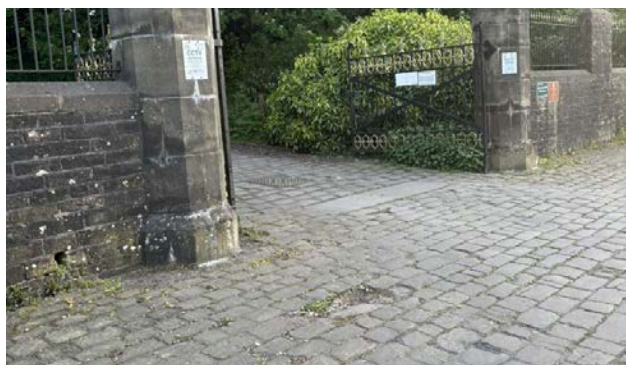
The canal towpath can be seen here with the locks on the left hand side.

Undercliffe Cemetary

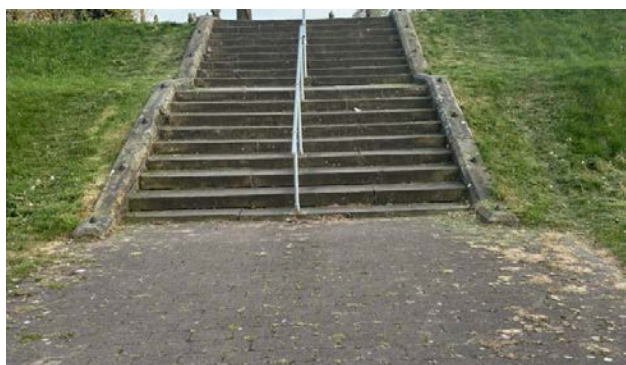
Further accessibility information



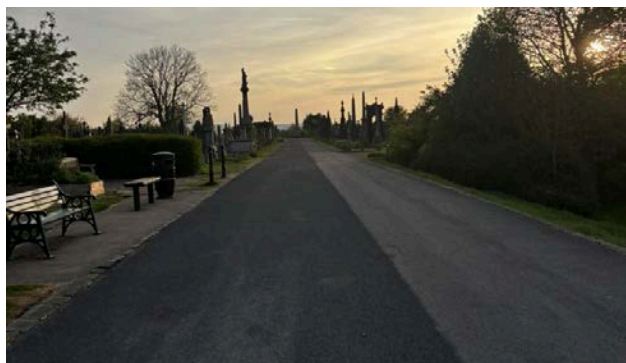
Access from the Old Road is flat but the cobbles create uneven terrain. The ground is more even after entering the gates.



Access from Otley Road is on an incline and has uneven cobbles.



Within the Cemetery, the path leads to steep steps or a sloping path up to the main boulevard.



The main boulevard has smooth terrain, and benches along the route that can be used for resting.

