

Bradford 2025
UK CITY OF CULTURE

Welcome to Bradford 2025 UK City of Culture, a year-long celebration of culture, creativity and the arts. We're presenting more than 1,000 shows, exhibitions and events across Bradford District this year – by and for everyone, with much of it completely free. Bradford 2025 could only happen now – and it could only happen here.

DISCOVER MORE
bradford2025.co.uk



Bradford on Foot

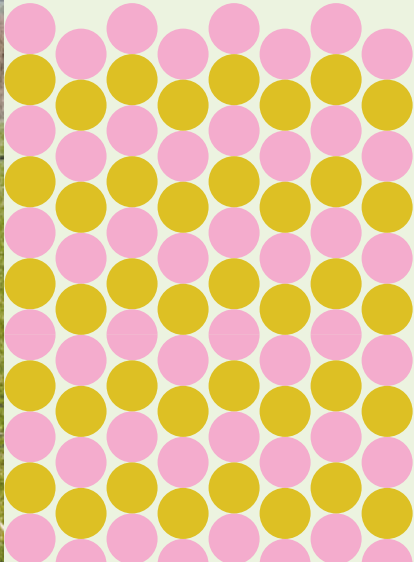
Bradford on Foot is a rich collection of walks around the 2025 UK City of Culture. Discover new places to visit and new groups to join. The walks have been selected by local people and partners from across the district.

Access the maps online or pick up the free paper maps at different locations across the district, including your local library.

Look out for other routes nearby in St Ives, Haworth and Thornton.



WALK NAME	Two Biscuit Walk
LOCATION	Wilsden
DISTANCE	2.59 km / 1.61 miles
TIME	48 mins
DIFFICULTY	Easy
LANDSCAPE	Fields, country lanes
HIGHLIGHTS	Biscuit eating, blackberry picking



Two Biscuit Walk: This circular walk takes a short loop around the country lanes and farmland surrounding north Wilsden. It was suggested by local resident Mark Dolby.

"It starts on the 'Magic Steps' at the top of our road. I'm not sure when or how they became magical but they did and now they are. At the top of the steps is a lane, which is the perfect place for blackberry picking during autumn.

There are two options depending on how far you (or in our case our young daughters) want to walk. You can climb to the 'One Biscuit Bench' where you are rewarded with a cup of tea and a single biscuit.

From there it's quick walk back down Wilsden's best sledging hill. However, if you don't stop and instead keep going up the hill, you reach the 'Two Biscuit Bench' where you can enjoy two biscuits, a cup of tea and the views over to the Hewenden Viaduct and beyond."



Access notes

Dirt and gravel paths and tracks, tree roots, footbridges, stiles, steps, kissing gates, two benches.

Parking: On-street parking in Wilsden.
Bus routes: 619, 616.
OS Map: 288 Bradford & Huddersfield.

Map key

Route	Road
Parking	Moorland
Train line	View point
Train station	Forest
Footpath	Cafe
Toilet	Canal/River



Two Biscuit Walk

- 1 This walk begins on Birchlands Avenue, near where it joins Harden Lane, Wilsden.
- 2 Head up Birchlands Avenue, following the road as it bends to the left.
- 3 Turn right on the public footpath next to the yellow grit box. The footpath is mildly steep with steps at the bottom and top.
- 4 At the top of the footpath turn right onto Tan House Lane.

- 5 Continue along Tan House Lane until you reach Pye Bank House. Take care as it is a narrow single lane country road used by vehicles.

Opposite Pyebank Barn, by the wall, is the 'One Biscuit Bench'. Take a seat and enjoy your first biscuit.
- 6 At the top of the road take the path leading up the ridge, passing the residential garage with the brown door.
- 7 Continue until you reach a fork in the path, keep right following the path straight ahead.
- 8 Continue following the rise until you reach the 'Two Biscuit Bench' on your left. Sit and enjoy two biscuits! Across from the bench, is an opening in the dry-stone wall of the adjacent field, go through this into the field and head down hill to Bents Lane.

- 9 Go the gate in the bottom left corner of the field and turn right onto Bents Lane.
- 10 Continue on Bents Lane, passing Upper and Middle Bents Farm until you arrive at Lower Bents farm.
- 11 Take the public footpath through the wooden kissing gate opposite the drive to Lower Bents Farm. Walk across the field to the small tree directly ahead.

- 12 Just after the tree is a stile, go through this into the adjacent field. Keep the well-built wall to your left and head down the field towards the houses ahead.
- 13 In the bottom left corner of the field is a metal kissing gate, go through this into the snicket. Walk down the snicket to the bottom where you will arrive at your starting location on the corner of Birchlands Avenue.

