

# Bradford 2025

UK CITY OF CULTURE

Welcome to Bradford 2025 UK City of Culture, a year-long celebration of culture, creativity and the arts. We're presenting more than 1,000 shows, exhibitions and events across Bradford District this year – by and for everyone, with much of it completely free. Bradford 2025 could only happen now – and it could only happen here.

DISCOVER MORE  
bradford2025.co.uk



# Bradford on Foot

DISCOVER OUR WONDERFUL DISTRICT

**WALK NAME**  
Saltaire Circular

**LOCATION**  
Saltaire and Gilstead

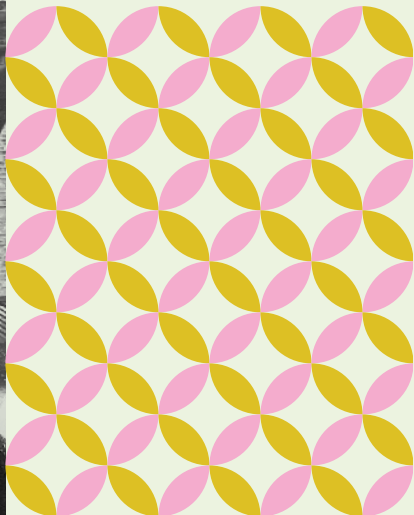
**DISTANCE**  
5.8 km / 3.6 miles

**TIME**  
1hr 45mins

**DIFFICULTY**  
Moderate

**LANDSCAPE**  
Park, riverside, woodland, canal

**HIGHLIGHTS**  
Local history, beech woodland, valley views



**Saltaire Circular:** This walk, in partnership with the Saltaire Collection, begins in Saltaire, taking in Roberts Park before heading into the Milner Estate and out to Gilstead before returning by the Leeds & Liverpool Canal.

The Saltaire Collection is an incredible archive of over 6000 documents, photographs, maps, plans, newspaper cuttings, artworks, books and objects that tells the local and global story of the village since the 1850s.

Discover more about the Saltaire Collection online:  
[saltairecollection.org](https://saltairecollection.org)



## Bradford on Foot

Bradford on Foot is a rich collection of walks around the 2025 UK City of Culture. Discover new places to visit and new groups to join. The walks have been selected by local people and partners from across the district. Access the maps online or pick up the free paper maps at different locations across the district, including your local library.

Look out for other routes nearby in Shipley, Bingley and Riddlesden.



## Look out for

**Roberts Park:** opened by Sir Titus Salt in 1871, it was designed by William Gay and originally named Saltaire Park. In 1920, Sir James Roberts gifted the park to Bradford Council and requested that it be renamed for his son, Bertram Foster Roberts, who had died young.

**The Milner Field Estate:** in 1872 a fine mansion was built for Titus Salt Junior. After he died, at just 44 years old, the subsequent four owners of the house met early deaths or suffered family tragedies. The mansion became known as a 'cursed house,' and after failing to sell in 1930, it fell into ruin.

**On the canal path:** note the grouped grey buildings on your left. These include a mill that manufactured flock for mattresses and was owned early in the 20th century by Glynn Thomas, who fought a High Court case involving Sir James Roberts over river water rights.

## Access notes

Woodland, paths, tracks, towpaths, steep uphill route.

**Parking:** Limited on-street parking on Victoria Road, Large car park at Salts Mill.

**Bus routes:** 676, 678, 679.

**OS Map:** 288 Bradford & Huddersfield.

## Map key

- |               |             |
|---------------|-------------|
| Route         | Road        |
| Parking       | Moorland    |
| Train line    | View point  |
| Train station | Forest      |
| Footpath      | Cafe        |
| Toilet        | Canal/River |



# Saltaire Circular

- 1 Start near the Boat House pub and cross across the footbridge over the river.
- 2 At the Roberts Park sign take the left-hand turn and continue past the Half-Moon Cafe.
- 3 Follow the path as it turns to the left. Then turn right through the small wooden gate. Continue straight along the dirt path with the water on your left.
- 4 At the end of the path there is a slope and set of steps. Go up the steps and turn right at the top, heading into the houses. There is an information sign showing you areas to explore.

- 5 At the bus stop take the left-hand path to go on to the Coach Road. Turn left along Coach Road. Continue along the main path and cross the small stone bridge.
- 6 Follow the track all the way to the South Lodge. Head straight on through the gateway and take the path into Delph Woods.
- 7 When the path forks take the left-hand path with the ravine on your left.
- 8 Pause for breath and rest your legs at Maggie's seat, an old fallen down tree on the right-hand of the path.

- 9 Carry on uphill until the Gatehouse at the far edge of the wood and exit through the large stone gateposts. Cross over the road to the pavement and turn left heading down the hill.
- 10 Continue for some time, passing Primrose Hill cottages and the entrance to Milner Field Farm on your left.  
  
As the road bends right, you can either take the shortcut to the canal by using the small signposted public footpath on the left just past the cottages or continue down the road, via the Fisherman's Pub. Remember to take in the view across the valley as you go down the hill.
- 11 Cross the small stone road bridge and, if you aren't detouring to the pub, cross the road to join the track heading to the towpath. Keep the canal on your left, passing Dowley Gap Locks.

- 12 The towpath switches to the other side of the canal, taking you over a stone bridge near a small converted mill. This is also where the earlier shortcut pops out onto the towpath.  
  
Stay on the towpath heading back towards Saltaire, the canal is now on your right.
- 13 Notice that the canal travels over a short aqueduct where you can look down as the River Aire crosses underneath. Look out for rowers from Bradford Amateur Rowing Club who can sometimes be spotted on the river.
- 14 Continue past Hirst Lock until the towpath brings you back into the heart of Saltaire.
- 15 Leave the canal at Victoria Road and head into the village.

