

# Bradford 2025

UK CITY OF CULTURE

Welcome to Bradford 2025 UK City of Culture, a year-long celebration of culture, creativity and the arts. We're presenting more than 1,000 shows, exhibitions and events across Bradford District this year – by and for everyone, with much of it completely free. Bradford 2025 could only happen now – and it could only happen here.

DISCOVER MORE  
bradford2025.co.uk



## WALK NAME Cliffe Castle

LOCATION  
Keighley

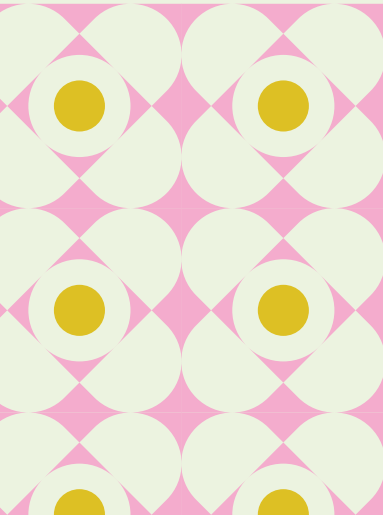
DISTANCE  
1 km / 0.6 miles

TIME  
30 mins

DIFFICULTY  
Easy

LANDSCAPE  
Parkland, woodland

HIGHLIGHTS  
Museum, playground, fountains



**Cliffe Castle:** Our route takes in the beautiful Victorian grounds of this historic former mansion house, now a museum. The gardens are home to glasshouses, water features, a cafe and playground.

Cliffe Castle was nominated for Bradford on Foot by Val Preston from our public call out. This walk is inspired by her work on the Bradford Wellbeing Walks which can be found across the district. To find out more about Cliffe Castle visit: [bradfordmuseums.org](https://bradfordmuseums.org)

## Access notes

Mainly tarmac paths but one section of steep steps and dirt path. Some benches. Toilets and cafe. Parking: Parking at Cliffe Castle Park by the main entrance from Spring Gardens Lane.

**Parking:** Car park off Spring Gardens Lane.  
**Bus routes:** 903 shuttle bus from Keighley centre.  
**OS Map:** OL21 South Pennines.

## Map key

- Route
- Parking
- Train line
- Train station
- Footpath
- Toilet
- Road
- Moorland
- View point
- Forest
- Cafe
- Canal/River



## Bradford on Foot

Bradford on Foot is a rich collection of walks around the 2025 UK City of Culture. Discover new places to visit and new groups to join. The walks have been selected by local people and partners from across paper maps at different locations across the district, including your local library.

Look out for other routes nearby in Shipley, Saltaire and Undercliffe.

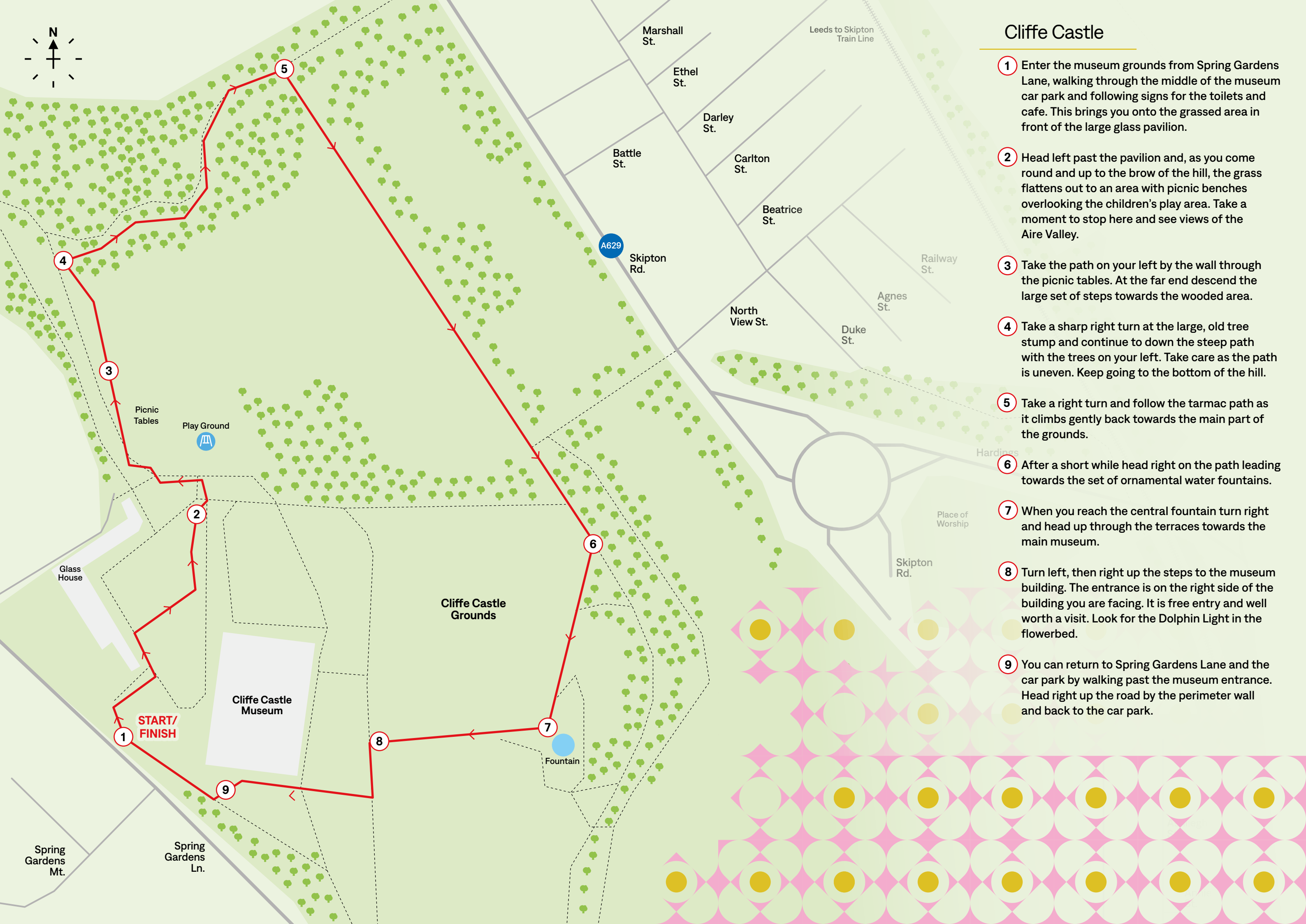
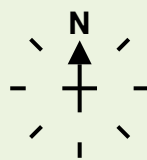
## Look out for

**Cliffe Castle Museum and Park:** Originally named Cliffe Hall, it was once the home of Victorian textile manufacturer and millionaire Henry Isaac Butterfield who embarked on a vast expansion of the house in the 1880s. With its new grandeur the property was renamed Cliffe Castle and became the scene of lavish parties that showcased its owner's wealth and status. The landscaped gardens date back to 1878 when many trees were planted, including lime, chestnut, and sycamore. They can still be seen today in the lush, wooded areas. After passing down two generations the castle and grounds were bought and repurposed as a formal public park and museum in 1959. The museum and gardens are free to enter and the rooms and galleries house a diverse collection of historical and geological artefacts, artworks, furniture, and stained glass.

**Dolphin Lamp:** Look out for the George Vulliamy Dolphin Lamp outside the museum entrance. If it looks familiar you may have seen its siblings along the Embankment in London. The lamp at Cliffe Castle is the only one to be found outside the capital.







## Cliffe Castle

- 1** Enter the museum grounds from Spring Gardens Lane, walking through the middle of the museum car park and following signs for the toilets and cafe. This brings you onto the grassed area in front of the large glass pavilion.
- 2** Head left past the pavilion and, as you come round and up to the brow of the hill, the grass flattens out to an area with picnic benches overlooking the children's play area. Take a moment to stop here and see views of the Aire Valley.
- 3** Take the path on your left by the wall through the picnic tables. At the far end descend the large set of steps towards the wooded area.
- 4** Take a sharp right turn at the large, old tree stump and continue to down the steep path with the trees on your left. Take care as the path is uneven. Keep going to the bottom of the hill.
- 5** Take a right turn and follow the tarmac path as it climbs gently back towards the main part of the grounds.
- 6** After a short while head right on the path leading towards the set of ornamental water fountains.
- 7** When you reach the central fountain turn right and head up through the terraces towards the main museum.
- 8** Turn left, then right up the steps to the museum building. The entrance is on the right side of the building you are facing. It is free entry and well worth a visit. Look for the Dolphin Light in the flowerbed.
- 9** You can return to Spring Gardens Lane and the car park by walking past the museum entrance. Head right up the road by the perimeter wall and back to the car park.